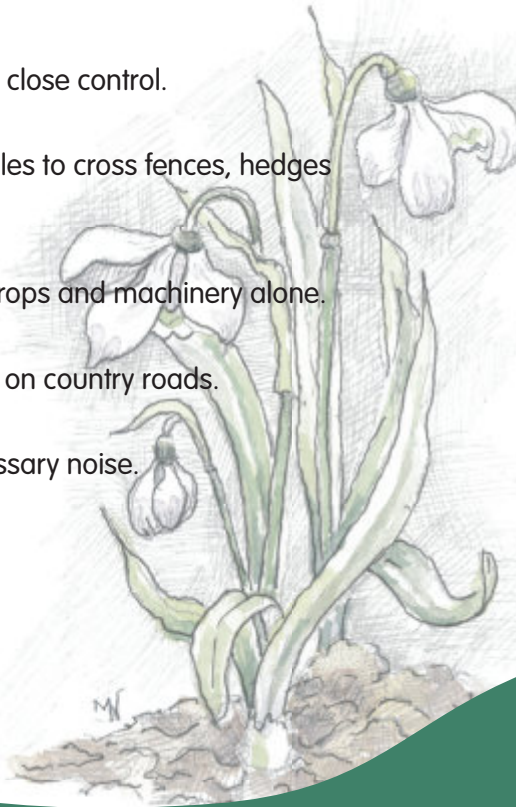


## Remember The Countryside Code!

### Respect • Protect • Enjoy

- Leave gates and property as you find them.
- Protect plants and animals and take your litter home.
- Keep dogs under close control.
- Use gates and stiles to cross fences, hedges and walls.
- Leave livestock, crops and machinery alone.
- Take special care on country roads.
- Make no unnecessary noise.



## Walks in the 'Jubilee' Series

- Walk 1 Four Nature Reserves
- Walk 2 From Stone Circle to Peat Bog
- Walk 3 Lost Village and Parkland
- Walk 4 Hanging Hill to Mossland



These leaflets are funded by the Aggregates Levy Sustainability Fund through The Countryside Agency, The RMC Environment Fund through English Nature and Aggregate Industries UK Ltd.



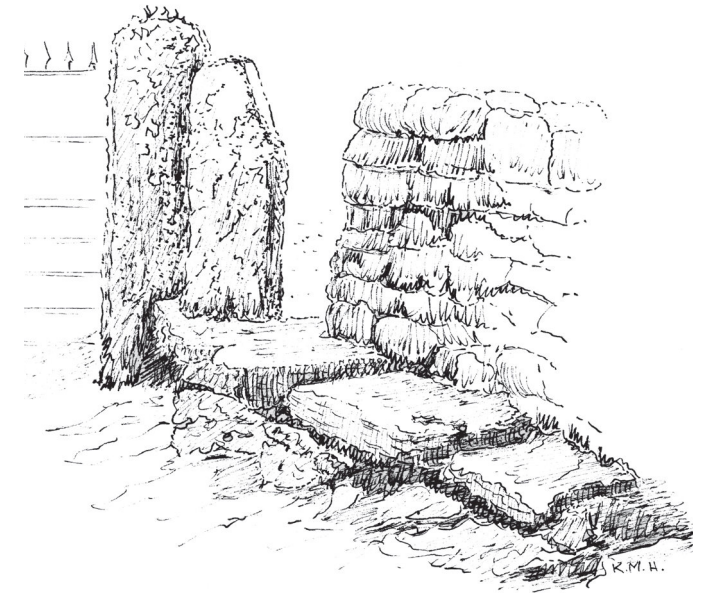
Walks devised by Kath Hayhurst with the assistance of Burton Fellwalking Society members.  
Drawings by Kath Hayhurst and members of Burton-in-Kendal Art and Craft Society 2006.

# Jubilee Walks

Burton - in - Kendal

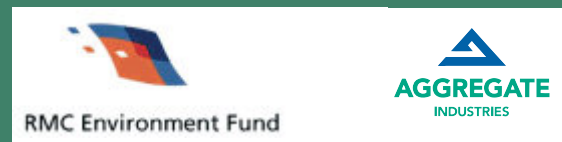
Cumbria

Walk 1 Four Nature Reserves



Burton-in-Kendal Parish Council Website

[www.burton-in-kendal-pc.gov.uk](http://www.burton-in-kendal-pc.gov.uk)



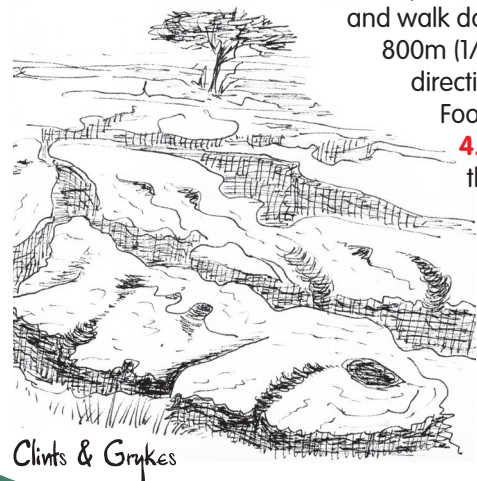
This is a 8 km (5 miles approx) circular walk using public footpaths and rights of way. Duration of walk approx 2 1/2 hrs (excluding stops). This is Walk 1 in a series of four walks originally commissioned in 2002 by Burton-in-Kendal Parish Council to celebrate the Golden Jubilee of HM Queen Elizabeth II.

# Four Nature Reserves.

Burton, Clawthorpe and Holme.

From Burton Square follow the path signed Boon Town Lane eastwards. **1.** At the junction turn left onto Kidnappers Lane, walk through two kissing gates, a wooden gate and another kissing gate until you reach Vicarage Lane. **2.** Cross the road onto Slape Lane passing the sign Bridle path to Burton Fell. Pause to look at the view and the Jubilee panorama plinth erected by Burton Parish Council in 2005. Continue along the path 1.5km (almost a mile) as it meanders upwards passing the entrance to the Nature Reserve called Lancelot Clark Storth on your right with a wooden seat. Go through the gate and keeping the wall on your left you will reach another plinth with information about the fauna and flora in Burton Fell reserve. Turn left through the gate into a small wood, take the right fork which leads to a small gate, then across two fields to a metal gate accessing Clawthorpe Road. **3.** Turn left

and walk down the road for 800m (1/2 mile) in a westerly direction until you see the Footpath to Holme sign **4.** on the right. Go through the wooden step-over stile by the gate. On your right is the gated entrance to Holme Park Quarry Reserve.



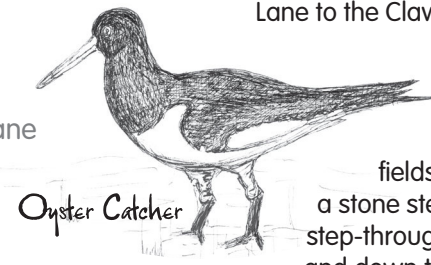
Clints & Grykes



Rosebay Willowherb

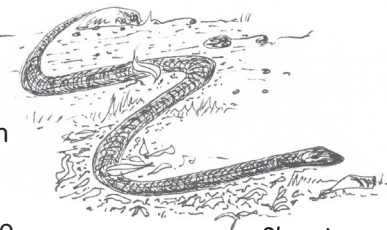


Burton Square



Oyster Catcher

A short diversion here will take you to a viewing platform on the quarry edge, then return to the entrance gate. Walk through the



Slow Worm

beech avenue and onto the limestone pavement which is Clawthorpe Fell Nature Reserve. Head across the clints & grykes taking care in wet weather, towards the far corner in a north westerly direction and towards a prominent telegraph pole. Then over the stone step stile and the Burton/Holme boundary, turn left and downhill into a field, walking towards the A6070 road. **5.** Take care and watch the traffic. Turn left and walk 200 metres/220 yards southwards along the road until you see a gated stone step-over stile on your left. Go through the stile into Curwen Woods Park. Taking a south east diagonal cross the private drive. Continue in the same

direction past the tennis court on your left and head for the top corner of the field, near a house. As you go over this step stile (see cover) you leave Holme Parish and enter Burton Parish again. **6.** Walk along Pipers Lane to the Clawthorpe Road. Turn right and walk downhill past Oakwood, Clawthorpe Lodge Farm and a bungalow called Borrans – all on your left. **7.** Then follow the sign Footpath to Burton on your left though the kissing gate into the fields. Cross the field diagonally and go through a stone step stile. Cross the next field to another stone step-through stile with a small gate. Bear right across and down the field to a wooden step-over stile by the bungalow Sunny Bank on to the A6070.

**8.** Walk south along the road and back into the village.

- View Point
- Boundary Stone
- Road
- Footpath
- County Boundary

Distance: 8 km / 5 miles

Time: 2 1/2 hrs approx without stops

Map OS Landranger 97 Kendal and Morecambe 1:50 000